

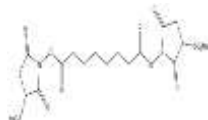
## BS3 Crosslinker

**ALTERNATE NAME:** bis-sulfosuccinimidyl suberate; BS3; sulfo-DSS; bis-sulfo-succinimidyl suberate; bis-sulfosuccinimidyl suberate; Sulfo-DSS; Suberic acid sulfo-NHS ester; BSSS; BS3-d0; sodium 1,1'-(octanedioylbis(oxy))bis(2,5-dioxopyrrolidine-3-sulfonate), BS<sub>3</sub> protein crosslinker

**CATALOG#:** 2327-50, 250, 1000, 1 set

**AMOUNT#:** 50 mg, 250 mg, 1 g, 1 set (10 x 2 mg)

**STRUCTURE:**



**MOLECULAR FORMULA#:** C<sub>16</sub>H<sub>18</sub>N<sub>2</sub>Na<sub>2</sub>O<sub>14</sub>S<sub>2</sub>

**MOLECULAR WEIGHT#:** 572.43

**CAS#:** 82436-77-9

**APPEARANCE:** White to off-white solid

**SOLUBILITY:** H<sub>2</sub>O (~ 6 mg/ml)

**PURITY:** ≥90% by NMR

**STORAGE:** +4 °C. Protect from moisture

**DESCRIPTION:**

BS3 crosslinker is a water-soluble, homobifunctional protein crosslinker

**KEY FEATURES:**

- Amine-reactive; has a non-cleavable spacer with arm length of 11.4 Å
- Water-soluble
- Membrane-impermeable

**APPLICATIONS:**

- Crosslinking of proteins through reaction with primary amines
- Useful for cross-linking cell surface proteins due to the membrane-impermeability of this reagent

**RELATED PRODUCTS:**

Sulfo-SMCC (Cat. No. 2320-50, 100, 1000, 1 EA)

Sulfo-NHS (Cat. No. 2321-500, 5G, 1 EA)

Sulfo-NHS-Biotin (Cat. No. 2322-50, 250, 1 EA)

Sulfo-SANPAH (Cat. No. 2324-50, 250)

Sulfo-LC-SPDP (Cat. No. 2325-50, 250)

Sulfo-NHS-LC-Biotin (Cat. No. 2326-50, 250, 1EA)

SPDP Crosslinker (Cat. No. 2328-50, 250)

Biotin-HPDP (Cat. No. 2329-50, 250)

Traut's Reagent (Cat. No. 2330-50, 250, 1000)

N-Hydroxy succinimide (Cat. No. 2331-1G, 5G, 25G)

DTSSP Crosslinker (Cat. No. 2337-50, 250)

**FOR RESEARCH USE ONLY! Not to be used on humans.**