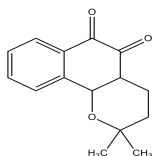


**PRODUCT:           β-Lapachone****ALTERNATE NAME:**       3,4-Dihydro-2,2-dimethyl-2*H*-naphtho[1,2-*b*]pyran-5,6-dione**CATALOG #:**               2262-5, 25**AMOUNT:**                 5 mg, 25 mg**STRUCTURE:****MOLECULAR FORMULA:**   C<sub>15</sub>H<sub>14</sub>O<sub>3</sub>**MOLECULAR WEIGHT:**     242.27**CAS NUMBER:**            4707-32-8**APPEARANCE:**            Orange solid**SOLUBILITY:**             DMSO (100 mM) or Ethanol (50 mM)**PURITY:**                 ≥98% by TLC**STORAGE:**                At -20° C. Protect from light and moisture**DESCRIPTION:**           Cell-permeable. A DNA topoisomerase I inhibitor. Unlike Camptothecin (Cat. No. 1039), β-lapachone does not stabilize the cleavable complex, indicating a novel mode of action. Induces apoptosis in HL-60 and human prostate cancer cells via a p53-independent mechanism and blocks the cell cycle at G<sub>0</sub>/G<sub>1</sub>. Also acts as a histone demethylase inhibitor selective to JMJD2DE (IC<sub>50</sub> = 3.6 μM).**REFERENCE:**              Li, C.J., *et al.* (1993). *J. Biol. Chem.* **268**, 22463-22468;  
Sakurai, M., *et al.* (2010). *Mol. Biosyst.* **6**, 357-364.**HANDLING:**                Do not take internally. Wear gloves and mask when handling the product! Avoid contact by all modes of exposure.**RELATED PRODUCTS:**

Betulinic Acid (Cat. No. 1552-25)  
Bexarotene (Cat. No. 1575-5, 50)  
Capecitabine (Cat. No. 1741-100, 1000)  
Carboplatin (Cat. No. 1553-100)  
Cisplatin (Cat. No. 1550-100, 1000)  
Daunorubicin.HCl (1524-10, 50, 500)  
Doxorubicin HCl (Cat. No. 1527-5)  
(-)-Epigallocatechin gallate (Cat. No. 1841-50)  
Fludarabine Phosphate (Cat. No. 1763-10, 50)  
Gemcitabine Hydrochloride (Cat. No. 1759-25, 100)  
Genistein (Cat. No. 1533-10)  
GSK-J4 hydrochloride (Cat. No. 2259-1, 5)  
GSK-J1 sodium salt (Cat. No. 2260-1, 5)  
Nedaplatin (Cat. No. 1576-5)  
Oxaliplatin (Cat. No. 1577-25)  
Piperlongumine (Cat. No. 1919-10, 50)  
Paclitaxel (Cat. No. 1567-25)  
Pixantrone maleate (Cat. No. 1958-5, 25)  
Tamoxifen Citrate (Cat. No. 1551-1000)  
Tranylcypromine hemisulfate (Cat. No. 1816-25, 100)  
Vinorelbine tartrate (Cat. No. 1957-5, 25)

**USAGE:**                               **FOR RESEARCH CH USE ONLY! Not to be used in humans**