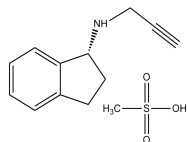


**PRODUCT: Rasagiline mesylate****ALTERNATE NAME:** (1*R*)-2,3-Dihydro-*N*-2-propynyl-1*H*-inden-1-amine methanesulfonate**CATALOG #:** 2237-50, 250**AMOUNT:** 50 mg, 250 mg**STRUCTURE:****MOLECULAR FORMULA:** C<sub>12</sub>H<sub>13</sub>N·CH<sub>3</sub>SO<sub>3</sub>H**MOLECULAR WEIGHT:** 267.34**CAS NUMBER:** 161735-79-1**APPEARANCE:** A white solid**SOLUBILITY:** DMSO (>20 mg/ml) or H<sub>2</sub>O (>20 mg/ml)**PURITY:** ≥99%**STORAGE:** At -20° C. Protect from light and moisture**DESCRIPTION:** Rasagiline is a selective and irreversible inhibitor of monoamine oxidase (MAO) that has been used as a monotherapy in early Parkinson's disease or as an adjunct therapy in more advanced cases.**REFERENCE:** Finberg, J.P., and Youdim, M.B. (2002). *Neuropharmacology* **43**, 1110-1118.**HANDLING:** Do not take internally. Wear gloves and mask when handling the product! Avoid contact by all modes of exposure.**RELATED PRODUCTS:**

AMI-1 (Cat. No. 1943-5, 25)

Aza-2'-deoxycytidine (Cat. No. 1754-10, 50)

5- BIX01294 (Cat. No. 1678-5, 25)

Bromodomain Inhibitor, (+)-JQ1 (Cat. No. 2070-1, 5)

EZSolution™ (+)-JQ1 (Cat. No. 2091-1)

3-Deazaneplanocin (Cat. No. 2060-250, 1000)

Lomeguatrib (Cat. No. 2224-5, 25)

RG108 (Cat. No. 1679-10, 30)

UNC0638 (Cat. No. 1933-1, 5)

Zebularine (Cat. No. 225-1, 5)

**USAGE:****FOR RESEARCH CH USE ONLY! Not to be used in humans**