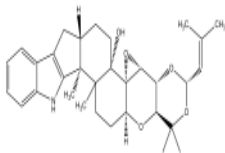


PRODUCT: Terpendole C

CATALOG #: 2214-250, 1000

AMOUNT: 250 µg, 1 mg

STRUCTURE:

MOLECULAR FORMULA: C₃₂H₄₁NO₅

MOLECULAR WEIGHT: 519.67

CAS NUMBER: 156967-65-6

APPEARANCE: Off-white solid

SOLUBILITY: DMSO or EtOH

PURITY: ≥95% by HPLC

STORAGE: Store at -20 °C. Protect from air and light

DESCRIPTION: Isolated from *Albophoma yamanashiensis*. An acyl-CoA:cholesterol acyltransferase (ACAT) isozymes ACAT1 and ACAT2 inhibitor. Also acts as a tremorgen and cholesteryl ester (CE) synthesis inhibitor.

REFERENCE: Huang, X. H., *et al.* (1995). *J. Antibiot.* **48**, 5-11

HANDLING: Do not take internally. Wear gloves and mask when handling the product! Avoid contact by all modes of exposure.

USAGE: *FOR RESEARCH CH USE ONLY! Not to be used in humans*