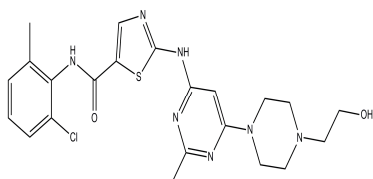


PRODUCT: EZSolution™ Dasatinib

ALTERNATE NAME BMS-354825; Sprycel

CATALOG #: 2029-25 25 mg

STRUCTURE:



MOLECULAR FORMULA: C₂₂H₂₆ClN₇O₂S

MOLECULAR WEIGHT: 488.01

CAS NUMBER 302962-49-8

APPEARANCE: Liquid

FORMULATION: 100 mM solution in DMSO

PURITY: ≥99% by HPLC

STORAGE: Store at -20°C. Protect from air and light

DESCRIPTION: A 100 mM (25 mg in 512 µl) solution of Dasatinib (Cat. No. 1586-25) in anhydrous DMSO.

HANDLING: Do not take internally. Wear gloves and mask when handling the product! Avoid contact by all modes of exposure.

RELATED PRODUCTS:

- A 83-01 (Cat. No. 1725-1)
- ABT-869 (Cat. No. 1615-1,5)
- Axitinib (Cat. No. 1581-5, 25)
- BIBW2992 (Cat. No. 1616-1,5)
- BMS-599626 (Cat. No. 1614-1,5)
- Bosutinib (Cat. No. 1584-5, 25)
- Canertinib (Cat. No. 1617-5)
- Carbozantinib (Cat. No. 1935-5, 25)
- Cediranib (Cat. No. 1613-1,5)
- CP-690550 (Cat. No. 1622-5,25)
- Crizotinib (Cat. No. 1934-5, 25)
- Dasatinib (Cat. No. 1586-25, 100)
- Emodin (Cat. No. 1875-25, 100)
- Enzastaurin (LY317615)(Cat. No. 1619-1,5)
- Erlotinib, Hydrochloride Salt (Cat. No. 1588-100,1000)
- EZSolution™ Staurosporine (Cat. No. 1745-01)
- Gefitinib (Cat. No. 1589-5,25)
- Genistein (Cat. No. 1533-10, 100)
- Go 6976 (Cat. No. 1711-500)
- Imatinib Mesylate (Cat. No. 1625-100, 1000)
- Lapatinib Ditosylate (Cat. No. 1624-25,100)
- Motesanib (Cat. No. 2023-5, 25)
- Nilotinib (Cat. No. 1750-25, 100)
- PD 153035, Hydrochloride (Cat. No. 1656-2)
- PD173074 (Cat. No. 1675-1)
- Saracatinib (Cat. No. 1582-5, 25)
- SB-431542 (Cat. No. 1674-1)
- Sorafenib (Cat. No. 1594-5, 25)
- Staurosporine (Cat. No. 1048-01,1)
- Tamoxifen Citrate (Cat. No. 1551-1000)
- SU 1498 (Cat. No. 1836-1,5)
- SU-5402 (Cat. No. 1645-05)
- SU 6668 (Cat. No. 1931-5, 25)
- SU 11274 (Cat. No. 1938-5, 25)
- Sunitinib Malate (Cat. No. 1611-100, 1000)
- Tandutinib (Cat. No. 2024-5, 25)
- Tyrphostin AG 1295 (Cat. No. 1571-5)
- Tyrphostin AG 490 (Cat. No. 1570-5)
- Vandetanib (Cat. No. 1751-25, 100)
- Vatalanib DiHCl Free Base (Cat. No. 2025-5, 25)

USAGE: *FOR RESEARCH USE ONLY! Not to be used in humans.*