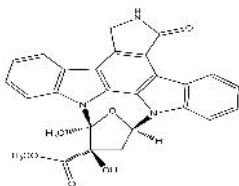


PRODUCT: K252a

ALTERNATE NAME: SF 2370
CATALOG #: 2013-500,1000
AMOUNT: 500 µg, 1 mg

STRUCTURE:

MOLECULAR FORMULA: C₂₇H₂₁N₃O₅

MOLECULAR WEIGHT: 467.47

CAS NUMBER: 99533-80-9

APPEARANCE: White solid

SOLUBILITY: DMSO (100 mg/ml)

PURITY: ≥ 98% by HPLC

STORAGE: Store at -20 °C. Protect from light.

DESCRIPTION: An analog of Staurosporine (Cat. No. 1048) that acts as a non-selective protein kinase inhibitor. Inhibits PKA (K_i = 18 nM), PKC (K_i = 25 nM), and PKG (K_i = 20 nM). Potently inhibits CaMK (K_i = 1.8 nM), competitively with ATP and noncompetitively with the substrate.

HANDLING: Do not take internally. Wear gloves and mask when handling the product! Avoid contact by all modes of exposure.

RELATED PRODUCTS:

Fasudil MonoHCl (Cat. No. 1787-10, 50)
H-89 DiHCl (Cat. No. 1768-1, 5)
KN-93, Water-Soluble (Cat. No. 1909-1, 5)
Staurosporine (Cat. No. 1048-01, 1)
EZSolution™ Staurosporine (Cat. No. 1745-01)
Stauprimide (Cat. No. 1743-500)

USAGE: **FOR RESEARCH CH USE ONLY! Not to be used in humans**