

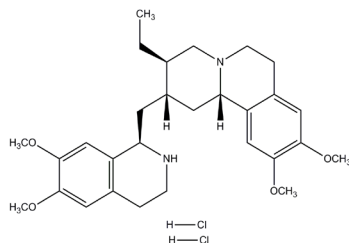
Emetine dihydrochloride

ALTERNATE NAME: 2*S*,3*R*,11*bS*)-2-[[*(1R)*-6,7-Dimethoxy-1,2,3,4-tetrahydroisoquinolin-1-yl]methyl]-3-ethyl-9,10-dimethoxy-2,3,4,6,7,11*b*-hexahydro-1*H*-pyrido [2,1-*a*]isoquinoline

CATALOG #: 1970-50, 250

AMOUNT: 50 mg, 250 mg

STRUCTURE:



MOLECULAR FORMULA: C₂₉H₄₀N₂O₄·2HCl

MOLECULAR WEIGHT: 553.56

CAS NUMBER: 316-42-7

APPEARANCE: White to off-white solid

SOLUBILITY: Water (~ 100 mg/ml)

PURITY: ≥98% by titration

STORAGE: Store at +4 °C. Protect from moisture

DESCRIPTION: A bitter-tasting crystalline alkaloid, derived from ipecac root and used in the treatment of amebiasis and as an emetic. Irreversibly blocks protein synthesis by inhibiting the movement of ribosome along the mRNA. Induces hypotension by blocking adrenoceptors. Inhibits DNA replication in the early S phase. Inhibits HIF-1 activation by hypoxia. Induces apoptosis in leukemia cells. Also, selectively inhibits multiple glioblastoma (GBM) stem cells-enriched cultures. It has been found to inhibit endemic human coronaviruses and MERS-CoV in cell culture and cell entry assays.

REFERENCE: Visnyei, K., *et al.* (2011). *Mol. Cancer Ther.* **10**, 1818-1828.

FOR RESEARCH USE ONLY! Not to be used on humans.

RELATED PRODUCTS:

- Betulinic Acid (**Cat. No. 1552-25**)
- Bexarotene (**Cat. No. 1575-5, 50**)
- Capecitabine (Cat. No. 1741-100, 1000)
- Carboplatin (**Cat. No. 1553-100**)
- Cisplatin (**Cat. No. 1550-100,1000**)
- Daunorubicin.HCl (**1524-10,50,500**)
- Doxorubicin HCl (**Cat. No. 1527-5**)
- (-)-Epigallocatechin gallate (**Cat. No. 1841-50**)
- Fludarabine Phosphate (**Cat. No. 1763-10, 50**)
- Gemcitabine Hydrochloride (**Cat. No. 1759-25, 100**)
- Genistein (**Cat. No. 1533-10**)
- Nedaplatin (**Cat. No. 1576-5**)
- Oxaliplatin (**Cat. No. 1577-25**)
- Piperlongumine (**Cat. No. 1919-10, 50**)
- Paclitaxel (**Cat. No. 1567-25**)
- Pixantrone maleate (**Cat. No. 1958-5, 25**)
- Tamoxifen Citrate (**Cat. No. 1551-1000**)
- Vinblastine Sulfate (**Cat. No. 1959-5, 25**)
- Vinorelbine tartrate (**Cat. No. 1957-5, 25**)