

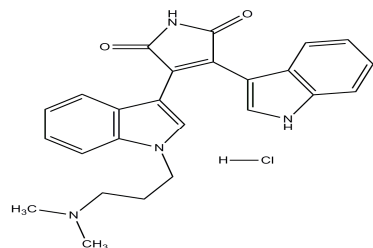
Bisindolylmaleimide I hydrochloride

ALTERNATE NAME: 3-[1-(Dimethylaminopropyl)indol-3-yl]-4-(indol-3-yl)maleimide hydrochloride; GF 109203X; Gö 6850; BIM I

CATALOG #: 1947-1, 5

AMOUNT: 1 mg, 5 mg

STRUCTURE:



MOLECULAR FORMULA: C₂₅H₂₄N₄O₂·HCl

MOLECULAR WEIGHT: 448.94

CAS NUMBER: 176504-36-2

APPEARANCE: Orange to red solid

SOLUBILITY: DMSO (~20 mg/ml)

PURITY: ≥98% by NMR

STORAGE: Store at -20 °C. Protect from light and air

DESCRIPTION: Cell-permeable. A hydrochloride salt of the protein kinase C (PKC) inhibitor Bisindolylmaleimide I (Cat. No. 1945-1, 5) that displays better solubility in water.

REFERENCE: Toullec, D., *et al.* (1991). *J. Biol. Chem.* **266**, 15771-15781.

HANDLING: Do not take internally. Wear gloves and mask when handling the product! Avoid contact by all modes of exposure.

RELATED PRODUCTS:

Bisindolylmaleimide I (**Cat. No. 1945-1, 5**)

Enzastaurin (LY317615)(**Cat. No. 1619-1,5**)

Gö 6976 (**Cat. No. 1711-500**)

EZSolution™ Gö 6976 (**Cat. No. 1785-500**)

H-89 Dihydrochloride (**Cat. No. 1768-1,5**)

Staurosporine (**Cat. No. 1048-01,1**)

EZSolution™ Staurosporine (**Cat. No. 1745-01**)

Tamoxifen Citrate (**Cat. No. 1551-1000**)