

PRODUCT:**Robotnikinin****ALTERNATE NAME:**

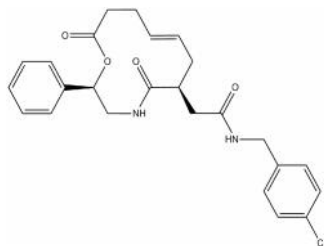
N-[(4-Chlorophenyl)methyl]-2-[(2R,6S,8E)-5, 12-dioxo-2-phenyl-1-oxa-4-azacyclododec-8-en-6-yl]acetamide

CATALOG #:

1923-1

AMOUNT:

1 mg

STRUCTURE:**MOLECULAR FORMULA:**C₂₅H₂₇ClN₂O₄**MOLECULAR WEIGHT:**

454.95

CAS NO.:

1132653-79-2

APPEARANCE:

White solid

SOLUBILITY:

DMSO

PURITY:

97% by NMR

STORAGE:

Store at -20°C

DESCRIPTION:

A small-molecule chemical inhibitor of Sonic hedgehog (Shh) signaling, that blocks hedgehog signaling through specific binding and blockade of Shh signaling factor. It is the first-characterized hedgehog inhibitor whose molecular mechanism of action is through blockade of Shh protein and not a subsequent factor of the hedgehog signaling cascades. Robotnikinin binds to the Shh-N terminal protein in a concentration-dependent fashion with a K_d of 9 μ M.

REFERENCE:Stanton, B.Z., *et al.* (2009). *Nat. Chem. Biol.* **5**, 154-156.**NOTE:**

Sold for research purposes under license agreement from Harvard University

RELATED PRODUCTS:

BODIPY-Cyclopamine (Cat. No. 2160-50, 250)

Cyclopamine (Cat. No. 1578-5)

Cyclopamine-KAAD (Cat. No. 1910-50)

GANT58 (Cat. No. 1812-5, 25)

GANT61 (Cat. No. 1892-5)

GDC-0449 (Cat. No. 1890-5, 25)

EZSolution™ GDC-0449 (Cat. No. 2539-5)

Hh Signaling Pathway Antagonist (Cat. No. 1659-1)

DiscoveryPak™ hedgehog Signaling Pathway Antagonists Set (Cat. No. K868-6)

HPI-1 (Cat. No. 2410-5, 25)

Itraconazole (Cat. No. 1987-50, 100, 500, 1000)

Jervine (Cat. No. 2357-1, 5)

JK-184 (Cat. No. 1726-1)

Purmorphamine (Cat. No. 1672-5)

Robotnikinin (Cat. No. 1923-1)

SANT-1 (Cat. No. 1978-1,5)

SANT-2 (Cat. No. 1976-1, 5)

Smo Antagonist, SA1 (Cat. No. 2154)

Smo Antagonist, SA9 (Cat. No. 2155)

Smo Antagonist, SA10 (Cat. No. 2159)

Sonic Hedgehog, human recombinant (Cat. No. 4010-25, 100, 1000)

Sonic Hedgehog, murine recombinant (Cat. No. 4020-25, 100, 1000)

Tomatidine hydrochloride (Cat. No. 1893-25)

HANDLING:

Do not take internally. Wear gloves and mask when handling the product! Avoid contact by all modes of exposure.

FOR RESEARCH USE ONLY! Not to be used on humans.