

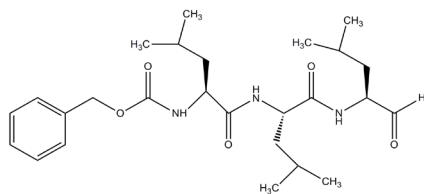
PRODUCT: MG-132

Alternate name: Z-Leu-Leu-Leu-CHO; Z-LLL-CHO

CATALOG #: 1703-5, 25

AMOUNT: 5 mg, 25 mg

STRUCTURE:

MOLECULAR FORMULA: C₂₆H₄₁N₃O₅

MOLECULAR WEIGHT: 475.6

CAS NUMBER: 133407-82-6

PURITY: ≥98% by HPLC; identity determined by MS.

APPEARANCE: White to off-white powder

SOLUBILITY: Soluble in DMSO (10 mg/ml)

STORAGE CONDITIONS: -20° C.

DESCRIPTION:

A cell-permeable, potent, and reversible proteasome inhibitor ($K_i = 4$ nM). Reduces degradation of ubiquitin-conjugated proteins in mammalian cells and permeable strains of yeast by the 26S complex without affecting its ATPase or isopeptidase activities. Activates c-Jun N-terminal kinase (JNK1), which initiates apoptosis. Inhibits NF- κ B activation ($IC_{50} = 3$ μ M). Prevents γ -secretase cleavage. Calpain inhibitors such as MDL28170 and MG132 may interfere with proteolytic processing of coronavirus S protein thereby preventing virus entry.

RELATED PRODUCTS:

- AEBSF, HCl (Cat. No. 1644-200, 1G)
- Aprotinin (Cat. No. 4690-5, 100, 1000)
- Batimastat (Cat. No. 1704-1)
- E-64 (Cat. No. 1739-5, 25)
- *clasto*-Lactacystin- β -lactone (Cat. No. 1710-100)
- Lactacystin (Cat. No. 1709-200)
- Leupeptin, Hemisulfate (Cat. No. 1648-25, 50, 100)
- Marimastat (Cat. No. 1790-1,5)
- Nafamostat Mesylate (Cat. No. 1760-10, 50)
- PMSF (Cat. No. 1548-5)
- Pepstatin A (Cat. No. 1732-25, 100)

FOR RESEARCH USE ONLY! Not to be used on humans.