

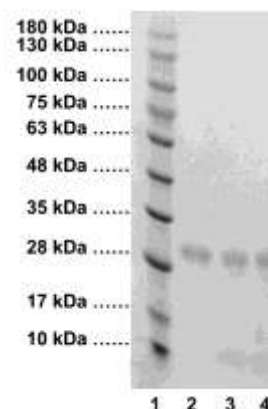
Active Human Cathepsin L

CATALOG #:	1135-5	5 µg
	1135-100	100 µg
	1135-1000	1 mg
SOURCE:	<i>E. coli</i>	
ALTERNATIVE NAMES:	CTSL, CTSL1	
FORM:	Liquid.	
FORMULATION:	0.5 mg/ml in 25 mM Sodium Acetate, 50 mM NaCl, pH 5.5 containing 50% glycerol	
PURITY:	≥90% by SDS-PAGE	
MOL. WT.:	24.2 kDa (114-333 aa)	
STORAGE CONDITIONS:	Store at -80° C, stable for at least 6 months as supplied. Use as provided or dilute with 50% glycerol to 0.1 mg/ml. Aliquot immediately and store at -80°C. Avoid freeze/thaw cycles.	
APPLICATIONS:	Recombinant Cathepsin L is useful in inhibitor screening, kinetic studies and cleavage of substrates <i>in vitro</i> or in tissue culture.	
ACTIVITY ASSAY:	BioVision's Active Cathepsin L has been activated through auto-catalytic activation of Procathepsin L (Cat # 7581) at low pH. The enzyme is fully active as seen from its ability to cleave a fluorogenic substrate Z-Phe-Arg-AFC (K142-100).	
SPECIFIC ACTIVITY:	> 2,000 mU/mg (1 U = digestion of 1 µmole of Z-Phe-Arg-AFC substrate (K142-100) per minute at 37°C in 50 mM Sodium Acetate, 100 mM NaCl, pH 5.5).	
BACKGROUND:	Cathepsin L is a lysosomal protease that can be secreted from the cell and is implicated to play a role in protein degradation, arthritis, apoptosis, and cancer.	

REFERENCES:

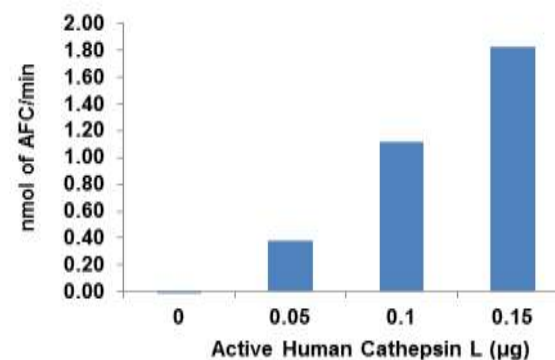
- Joseph, L.J., *et al.* (1988) *J. Clin. Invest.* 81:1621-1626.
- Turk, V., *et al.* (2001) *EMBO J.* 20:4629-4634.

For Research Use Only! Not to be used in humans.



SDS-PAGE (4-20%) of h-Cathepsin L:

- 1: Protein Marker
- 2: Human Cathepsin L (5 µg)
- 3: Human Cathepsin L (8 µg)
- 4: Human Cathepsin L (10 µg)



Measurement of h-Cathepsin L activity by Cathepsin L Activity Assay Kit (K142-100)

RELATED PRODUCTS:

- Human CellExp™ Cathepsin B, human recombinant (Cat. No. 7408-10)
- Human CellExp™ Cathepsin D, human recombinant (Cat. No. 7409-10)
- Human CellExp™ Cathepsin S, human recombinant (Cat. No. 7277-10, -50, -1000)
- Human CellExp™ Cathepsin L1, human recombinant (Cat. No. 7410-10)
- Cathepsin K, Active, human recombinant (Cat. No. 7600-5, -50)
- Cathepsin K, Active, mouse recombinant (Cat. No. 7597-5, -50)
- Cathepsin K, Active, rat recombinant (Cat. No. 7598-5, -50)
- Cathepsin B (active, human) (Cat. No. 1021-5)
- Cathepsin D (active, human) (Cat. No. 1022-5)
- Cathepsin H (active, human) (Cat. No. 1023-5)
- Procathepsin K, human recombinant (Cat. No. 1026-10, -50, -1000)
- Procathepsin K, mouse recombinant (Cat. No. 1027-10, -50, -1000)
- Procathepsin K, rat recombinant (Cat. No. 1029-10, -50, -1000)