

DiaEasy™ Dialyzer (10, 15, 20 ml) Floating racks

(Catalog # 1000-5, -10; Store at RT [15-25°C])

8/13

I. CATALOG #	1000-5	5 Floating racks
	1000-10	10 Floating racks

II. DESCRIPTION:

Biovision's DiaEasy™ dialyzer (10, 15 20 ml) floating racks are designed to support our DiaEasy™ Dialyzer tubes of 10, 15 and 20 ml volumes (Figure 1). Each of these racks can hold one tube. These floating racks can be used in two positions to change the height at which the DiaEasy™ Dialysis tubes are held (Figure 2).

III. STORAGE AND HANDLING:

Store the racks at room temperature.

IV. COMPANION PRODUCTS:

- DiaEasy™ Dialyzer (3 ml) Floating racks (Cat #. 1016-5, -10)
- DiaEasy™ Dialyzer (3 ml) Supporting trays (Cat #. 1017-5, -10)
- DiaEasy™ Dialyzer (800 µl) Floating racks (Cat #. 1018-5, -10)
- DiaEasy™ Dialyzer (800 µl) Supporting trays (Cat #. 1019-5, -10)
- DiaEasy™ Dialyzer (250 µl) Floating racks (Cat #. 1020-5, -10)
- DiaEasy™ Dialyzer (250 µl) Supporting trays (Cat #. 1028-5, -10)



Figure 1: DiaEasy™ Dialyzer (10, 15, 20 ml) Floating rack.

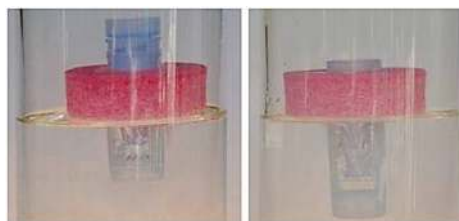


Figure 2: DiaEasy™ Dialysis floating rack in two positions to change the height at which the DiaEasy™ Dialysis tubes are held.

V. Related Products

DiaEasy™ Dialyzer (250 µl) MWCO 6-8 kDa (K1020-10, -25, -100)	DiaEasy™ Dialyzer (250 µl) MWCO 12-14 kDa (K1021-10, -25, -100)
DiaEasy™ Dialyzer (800 µl) MWCO 3.5 kDa (K1018-10, -25, -100)	DiaEasy™ Dialyzer (800 µl) MWCO 6-8 kDa (K1019-10, -25, -100)
DiaEasy™ Dialyzer (3 ml) MWCO 50 kDa (K1016-10, -25, -100)	DiaEasy™ Dialyzer (800 µl) MWCO 1 kDa (K1017-10, -25, -100)
DiaEasy™ Dialyzer (3 ml) MWCO 3.5 kDa (K1012-10, -25, -100)	DiaEasy™ Dialyzer (3 ml) MWCO 6-8 kDa (K1013-10, -25, -100)
DiaEasy™ Dialyzer (3 ml) MWCO 12-14 kDa (K1014-10, -25, -100)	DiaEasy™ Dialyzer (3 ml) MWCO 25 kDa (K1015-10, -25, -100)
DiaEasy™ Dialyzer (20 ml) MWCO 3.5 kDa (K1000-10, -25, -100)	DiaEasy™ Dialyzer (15 ml) MWCO 3.5 kDa (K1001-10, -25, -100)
DiaEasy™ Dialyzer (10 ml) MWCO 3.5 kDa (K1002-10, -25, -100)	DiaEasy™ Dialyzer (20 ml) MWCO 6-8 kDa (K1003-10, -25, -100)
DiaEasy™ Dialyzer (15 ml) MWCO 6-8 kDa (K1004-10, -25, -100)	DiaEasy™ Dialyzer (10 ml) MWCO 6-8 kDa (K1005-10, -25, -100)
DiaEasy™ Dialyzer (20 ml) MWCO 12-14 kDa (K1006-10, -25, -100)	DiaEasy™ Dialyzer (15 ml) MWCO 12-14 kDa (K1007-10, -25, -100)
DiaEasy™ Dialyzer (10 ml) MWCO 12-14 kDa (K1008-10, -25, -100)	DiaEasy™ Dialyzer (20 ml) MWCO 1 kDa (K1009-10, -25, -100)
DiaEasy™ Dialyzer (15 ml) MWCO 1 kDa (K1010-10, -25, -100)	

FOR RESEARCH USE ONLY! Not to be used on humans.