

Tag Antibodies

BioVision is pleased to announce the addition of six new tag-specific antibodies (CBP, DYKDDDDK, Strep II, T7, V5, SBP), which expands our product line to include fifteen tag-specific antibodies and six anti-fluorescent protein antibodies.

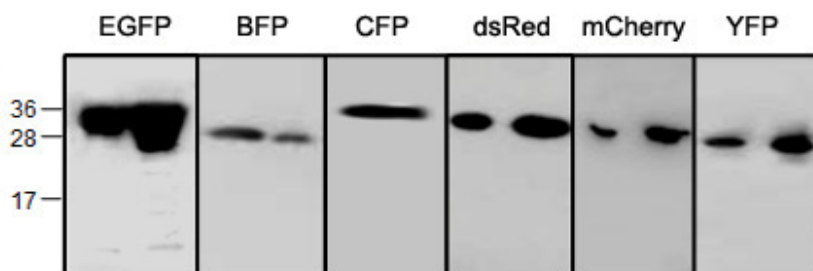
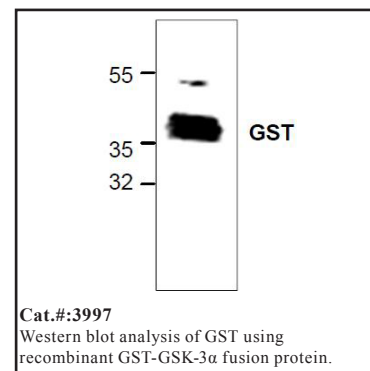
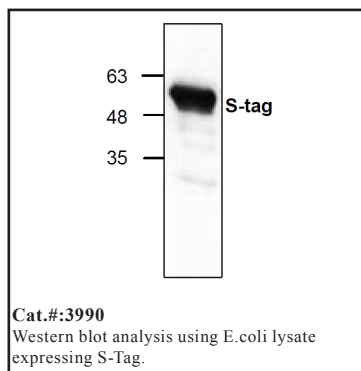
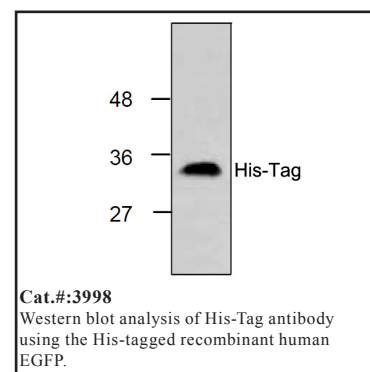
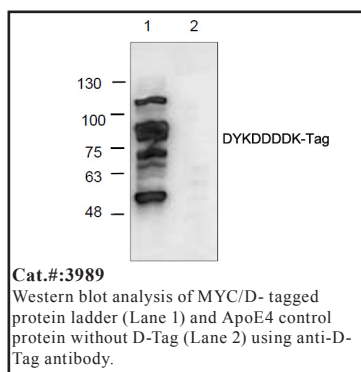
Epitope tagging is a powerful and versatile strategy in the labeling, isolation and detection of proteins and has applications in Western Blot, immunoprecipitation and immunostaining methods. Moreover, the small size of epitope-tags tends not to affect the protein's biochemical properties, while sometimes aiding in their recovery and solubility properties (e.g. GST). To utilize this feature, protein expression vectors are typically engineered with the gene of interest cloned in-frame, relative to the tag. Fusion protein detection and/or purification is mediated by highly specific antibodies to the epitope-tag, thus eliminating the need for antibodies to proteins from each newly cloned gene.

Commonly used epitope tags include glutathione-S-transferase (GST), c-myc, His-tag, DYKDDDDK (also known as FLAG®), green fluorescent protein (GFP), S-tag, influenza A virus haemagglutinin (HA), calmodulin binding protein (CBP), Streptavidin (Strep II) and the more recent T7-tag (from leader sequence of T7 bacteriophage gene10) and V5-tag (derived from P and V proteins of the paramyxovirus SV5). In addition, BioVision offers six antibodies for each of the fluorescent proteins (BFP, CFP, GFP, mCherry, RFP and YFP).

[Note: FLAG® is a trademark of Sigma-Aldrich]

Antibodies

Name	Cat. #
BFP Antibody	5994-100
CBP-Tag Antibody	3960-100
CBP-Tag Blocking Peptide	3960BP-50
CFP Antibody	5986-100
D-Tag Antibody	3989-100
DYKDDDDK Tag Antibody	3022-100
GFP Antibody	3999-100
GST-Tag Antibody	3997-100
HA-Biotin Antibody	3996B-100
HA-FITC Antibody	3996F-100
HA-Tag Antibody	3996-200
His-Tag Antibody	3646-100
His-Tag Antibody	3998-100
His-Tag Blocking Peptide	3998BP-50
mCherry Antibody	5993-100
Myc-Tag Antibody	3995-100
RFP (dsRed) Antibody	3993-100
SBP-Tag Antibody	3986-100
S-Tag Antibody	3990-100
Strep-Tag Antibody	3988-100
T7 Epitope -Tag Antibody	3987-100
V5-Tag Antibody	3985-100
YFP Antibody	3991-100



Western Blot Analysis Using Recombinant Fluorescent Proteins Probed with Individual Antibodies. EGFP (250 ng, 1 µg); BFP (100 ng, 50 ng); CFP (100 ng, 50 ng); dsRed (10 ng, 20 ng); mCherry (10 ng, 20 ng) and YFP (10 ng, 20 ng).