

E-Selectin Polyclonal Antibody

CATALOG #: 3631-100**AMOUNT:** 100 µg**LOT #:** _____**HOST:** Rabbit**IMMUNOGEN:** Synthetic peptide surrounding amino acid 584 of human E-Selectin (ID# BV-346)**SPECIES REACTIVITY:** human, mouse, rat**FORMULATION:**

100 µg (0.5 mg/ml) protein A purified rabbit anti-E-Selectin polyclonal antibody in phosphate-buffered saline (PBS) containing 0.02% thimerosal.

STORAGE CONDITIONS:

Store at -20°C. For long term storage, aliquot and freeze at -70°C. Avoid repeated freeze/thaw cycles.

DESCRIPTION:

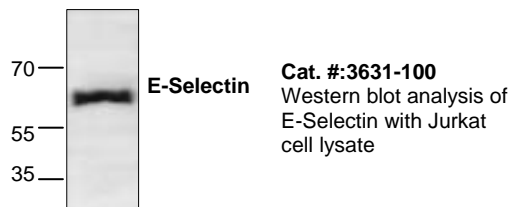
Selectins are a family of carbohydrate-binding proteins involved in mediating cellular interactions with leukocytes. E-Selectin (also called ELMA-1, CD62E) expressed on endothelial cells. L-Selectin (also called LECAM-1) is expressed on the majority of B and naïve T cells and on most monocytes, neutrophils and eosinophils. P-Selectin (also called GMP-140) expressed on activated platelets and endothelial cells. Selectins interact with specific carbohydrates expressed by activated endothelial cells, monocytes, and neutrophils.

SPECIFICITY:

The antibody recognizes 67 kDa E-Selectin in samples from human, mouse, and rat origins. Jurkat cell lysate, mouse small intestine and rat kidney tissue lysate can be used as positive controls. Blocking Peptide (Cat.# 3631BP-50) is available separately.

APPLICATION:

The antibody can be used for Western blotting (0.5-4 µg/ml) and immunohistochemistry (paraffin, 10-20 µg/ml). From researchers' feedback, the antibody also works in immunoprecipitation (10-20 µg/ml). However, the optimal conditions should be determined individually.

**RELATED PRODUCTS:**

Apoptosis Detection Kits & Reagents

- Annexin V Kits & Bulk Reagents
- Caspase Assay Kits & Reagents
- Mitochondrial Apoptosis Kits & Reagents
- Nuclear Apoptosis Kits & Reagents
- Apoptosis Inducers and Set
- Apoptosis siRNA Vectors

Cell Fractionation System

- Mitochondria/Cytosol Fractionation Kit
- Nuclear/Cytosol Fractionation Kit
- Membrane Protein Extraction Kit
- Cytosol/Particulate Rapid Separation Kit
- Mammalian Cell Extraction Kit
- FractionPREP Fractionation System

Cell Proliferation & Senescence

- Quick Cell Proliferation Assay Kit
- Senescence Detection Kit
- LDH-Cytotoxicity Assay Kit
- ADP/ATP Assay kits

Cell Damage & Repair

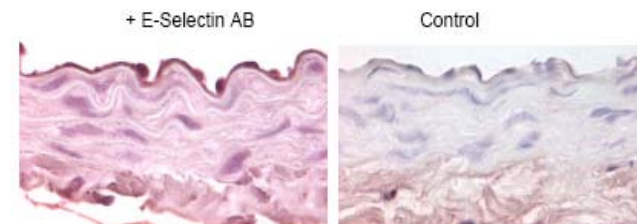
- HDAC& HAT Fluorometric & Colorimetric Assays & Drug Discovery Kits
- DNA Damage Quantification Kit
- Glutathione & Nitric Oxide Fluorometric & Colorimetric Assay Kits

Signal Transduction

- cAMP & cGMP Assay Kits
- Akt & JNK Activity Assay Kits
- Beta-Secretase Activity Assay Kit

Metabolism & Obesity

- Recombinant Adiponectin, Survivin, & Leptin
- CETP & PLTP Activity Assay & Drug Discovery Kits
- Cholesterol, HDL/LDL, Fatty Acid Quantification Kits
- Glucose, lactate, Uric acid, Ethanol, amino acid Assay Kits



Cat. 3631-100. Immunohistochemical staining of aorta paraffin section from obese diabetic mice. Staining of Endothelial cell layer has been observed.