

Cathepsin L Polyclonal Antibody

CATALOG #: 3192-100

AMOUNT: 100 µg

LOT #: _____

HOST: Rabbit

IMMUNOGEN: Synthetic peptide surrounding amino acid 223 of human Cathepsin L (ID# BV-399).

SPECIES REACTIVITY: human, mouse, rat

FORMULATION:

100 µg (0.2 mg/ml) affinity purified rabbit anti-cathepsin L polyclonal antibody in phosphate buffered saline (PBS), pH 7.2, containing 30% glycerol, 0.1% BSA, 0.01% thimerosal.

BACKGROUND:

Cathepsin L is a normal lysosomal cysteine endoproteases that is expressed in all cells. The latent 39 kDa pro-Cathepsin L must be processed by cleavage of the 96 amino acid pro-peptide, to generate the active two-chain form made up of 21 and 5 kDa subunits. Mature Cathepsin L is normally localized in the lysosomes where it plays a major role in intracellular protein catabolism. The fact that Cathepsin L is also capable of degrading extracellular matrix proteins suggests that it may play a role in invasion and metastasis and could be a useful prognostic indicator for cancer.

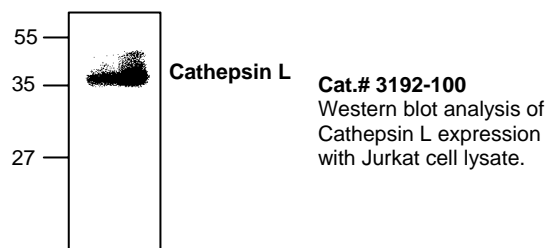
SPECIFICITY: Detects both the proenzyme and the mature form of cathepsin L.

APPLICATION AND USAGE:

The antibody can be used for Western blotting (0.5-4 µg/ml). However, the optimal conditions should be determined individually. Jurkat cell lysate (Cat.# 2401-100) can be used as a positive control. Blocking peptide (Cat.# 3192BP-50) is also available separately.

STORAGE CONDITIONS:

Store at -20°C. For long-term storage, aliquot and freeze at -70°C. Avoid repeated freeze/defrost cycles.



RELATED PRODUCTS:

Apoptosis Detection Kits & Reagents

- Annexin V Kits & Bulk Reagents
- Caspase Assay Kits & Reagents
- Mitochondrial Apoptosis Kits & Reagents
- Nuclear Apoptosis Kits & Reagents
- Apoptosis Inducers and Set
- Apoptosis siRNA Vectors

Cell Fractionation System

- Mitochondria/Cytosol Fractionation Kit
- Nuclear/Cytosol Fractionation Kit
- Membrane Protein Extraction Kit
- Cytosol/Particulate Rapid Separation Kit
- Mammalian Cell Extraction Kit
- FractionPREP Fractionation System

Cell Proliferation & Senescence

- Quick Cell Proliferation Assay Kit
- Senescence Detection Kit
- High Throughput Apoptosis/Cell Viability Assay Kits
- LDH-Cytotoxicity Assay Kit
- Bioluminescence Cytotoxicity Assay Kit
- Live/Dead Cell Staining Kit

Cell Damage & Repair

- HDAC Fluorometric & Colorimetric Assays & Drug Discovery Kits
- HAT Colorimetric Assay Kit & Reagents
- DNA Damage Quantification Kit
- Glutathione & Nitric Oxide Fluorometric & Colorimetric Assay Kits

Signal Transduction

- cAMP & cGMP Assay Kits
- Akt & JNK Activity Assay Kits
- Beta-Secretase Activity Assay Kit

Adipocyte & Lipid Transfer

- Recombinant Adiponectin, Survivin, & Leptin
- CETP Activity Assay & Drug Discovery Kits
- PLTP Activity Assay & Drug Discovery Kits
- Total Cholesterol Quantification Kit

Molecular Biology & Reporter Assays

- siRNA Vectors
- Cloning Insert Quick Screening Kit
- Mitochondrial & Genomic DNA Isolation Kits
- 5 Minutes DNA Ligation Kit
- 20 Minutes Gel Staining/Destaining Kit
- β-Galactosidase Staining Kit & Luciferase Reporter Assay Kit

Growth Factors and Cytokines

Monoclonal and Polyclonal Antibodies