

## Cytochrome c Polyclonal Antibody

<b>CATALOG #:</b>	3025-100
<b>AMOUNT:</b>	100 µg
<b>LOT #:</b>	_____
<b>HOST:</b>	Rabbit
<b>IMMUNOGEN:</b>	Synthetic peptide corresponding to residues surrounding amino acid 70 of rat cytochrome c (ID# BV-52).
<b>SPECIES REACTIVITY:</b>	human, mouse, rat (bovine, chick, dog, fruit fly, horse, kangaroo, monkey, pig, pigeon, rabbit, sheep, snail, tuna, turkey, yeast, zebrafish)
<b>FORMULATION:</b>	100 µg (0.2 mg/ml) affinity purified rabbit anti-Cytochrome c polyclonal antibody in phosphate buffered saline (PBS), pH 7.2, containing 30% glycerol, 0.5% BSA, 0.01% thimerosal.
<b>STORAGE CONDITIONS:</b>	Store at -20°C. For long-term storage, aliquot and freeze at -70°C. Avoid repeated freeze/defrost cycles.

### BACKGROUND:

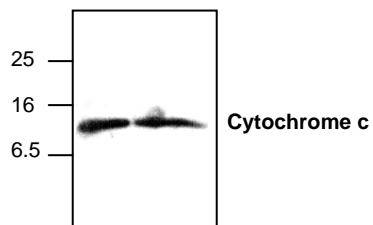
Cytochrome c (m.w. 12,500) is an electron transport protein from mitochondria. It is released from mitochondria to cytoplasm during the early stages of apoptosis, prior to caspase activation, DNA fragmentation, and loss of membrane potential. The cytoplasmic cytochrome c is associated with Apaf-1 and caspase-9 to activate caspase-3 and other caspases.

### SPECIFICITY:

The cytochrome c antibody detects the 12.6 kDa cytochrome c from human, mouse, and rat samples. Jurkat cell lysate, NIH3T3 cell lysate, and rat kidney tissue lysate can be used as positive controls. Blocking peptide is also available separately (Cat.# 3025BP-50).

### APPLICATION AND USAGE:

The antibody can be used for Western blotting (0.5-4 µg/ml) and immunoprecipitation (10-20 µg/ml). However, the optimal conditions should be determined individually.



**Cat.# 3025-100**  
Western blot analysis of cytochrome c in Jurkat (left lane) and 3T3 (right lane) cell lysates.

### RELATED PRODUCTS:

#### Apoptosis Detection Kits & Reagents

- Annexin V Kits & Bulk Reagents
- Caspase Assay Kits & Reagents
- Mitochondrial Apoptosis Kits & Reagents
- Nuclear Apoptosis Kits & Reagents
- Apoptosis Inducers and Set
- Apoptosis siRNA Vectors

#### Cell Fractionation System

- Mitochondria/Cytosol Fractionation Kit
- Nuclear/Cytosol Fractionation Kit
- Membrane Protein Extraction Kit
- Cytosol/Particulate Rapid Separation Kit
- Mammalian Cell Extraction Kit
- FractionPREP Fractionation System

#### Cell Proliferation & Senescence

- Quick Cell Proliferation Assay Kit
- Senescence Detection Kit
- High Throughput Apoptosis/Cell Viability Assay Kits
- LDH-Cytotoxicity Assay Kit
- Bioluminescence Cytotoxicity Assay Kit
- Live/Dead Cell Staining Kit

#### Cell Damage & Repair

- HDAC Fluorometric & Colorimetric Assays & Drug Discovery Kits
- HAT Colorimetric Assay Kit & Reagents
- DNA Damage Quantification Kit
- Glutathione & Nitric Oxide Fluorometric & Colorimetric Assay Kits

#### Signal Transduction

- cAMP & cGMP Assay Kits
- Akt & JNK Activity Assay Kits
- Beta-Secretase Activity Assay Kit

#### Adipocyte & Lipid Transfer

- Recombinant Adiponectin, Survivin, & Leptin
- CETP Activity Assay & Drug Discovery Kits
- PLTP Activity Assay & Drug Discovery Kits
- Total Cholesterol Quantification Kit

#### Molecular Biology & Reporter Assays

- siRNA Vectors
- Cloning Insert Quick Screening Kit
- Mitochondrial & Genomic DNA Isolation Kits
- 5 Minutes DNA Ligation Kit
- 20 Minutes Gel Staining/Destaining Kit
- β-Galactosidase Staining Kit & Luciferase Reporter Assay Kit

#### Growth Factors and Cytokines

#### Monoclonal and Polyclonal Antibodies